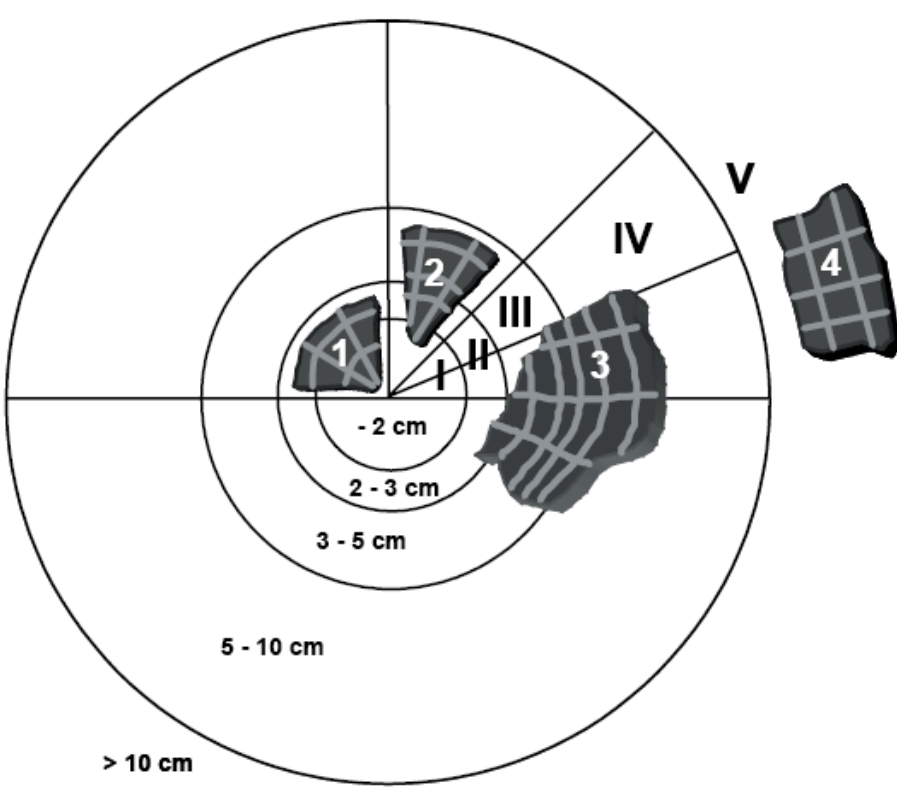


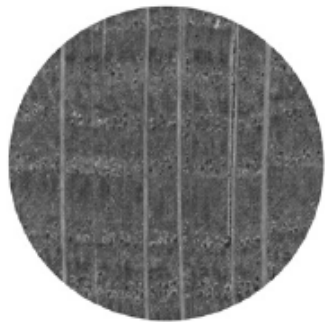


www.wodan.ie

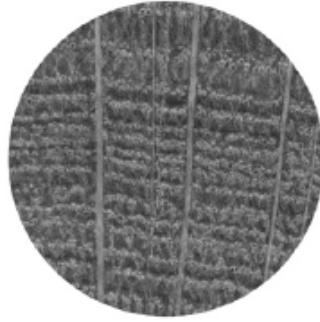


**Ludemann / Nelle
curvature**

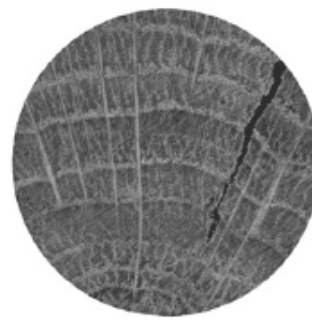
Diameter template, diameter size-classes (I-V) and examples of charcoal fragments to be sized (1-4). Result of sizing:
Fragment 1, class II; fragment 2, class III; fragment 3, class IV; fragment 4, class V.



Weakly curved rings
WC - 1

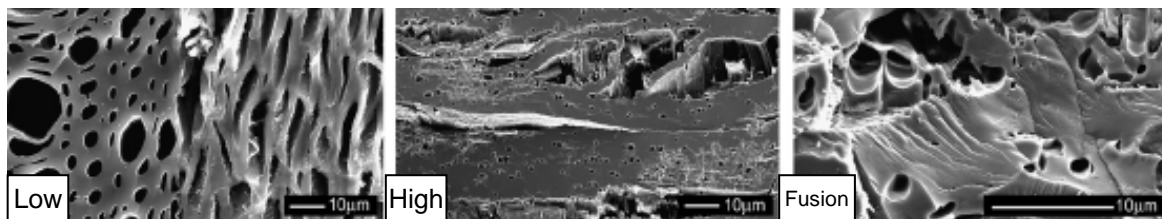


Moderately curved rings
MC - 2

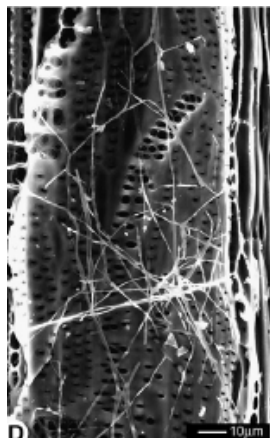


Strongly curved rings
SC - 3

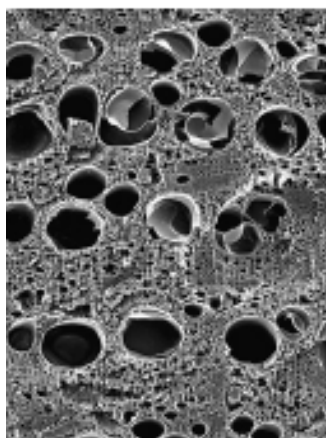
**Marguerie
curvature**



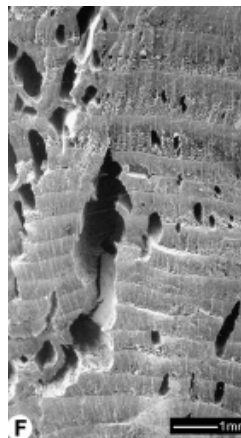
**Carbonisation
(Brilliance)**



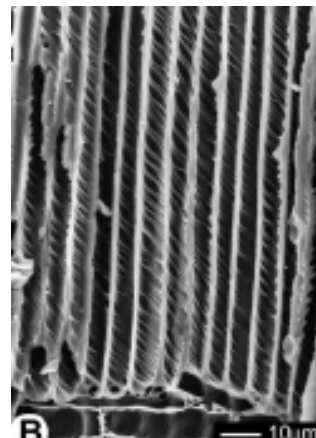
Hyphae



Thyllae



Radial Cracks



Reaction Wood